

Installation

Installation from Google Play

Open 'Google Play' application on your android phone. Type in search field 'A1207', you will find 'A1207 PenGauge' application (Fig. 1).

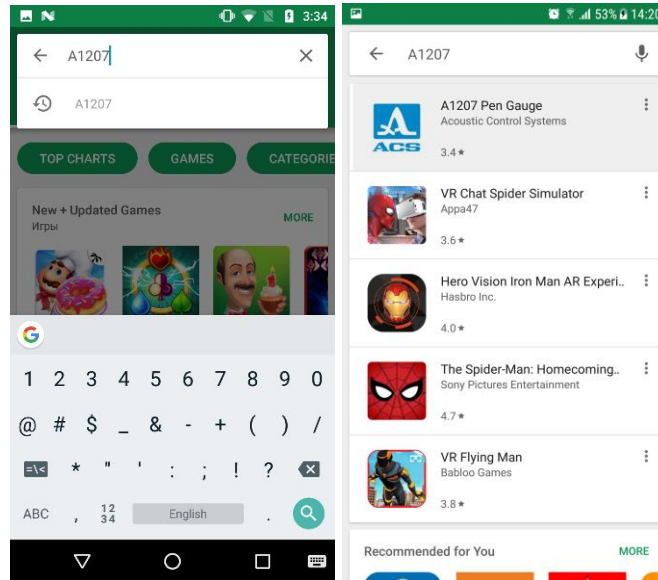


Fig. 1. Find application in Google Play

Click on 'Install' button. All installation procedures will be done automatically (Fig. 2)

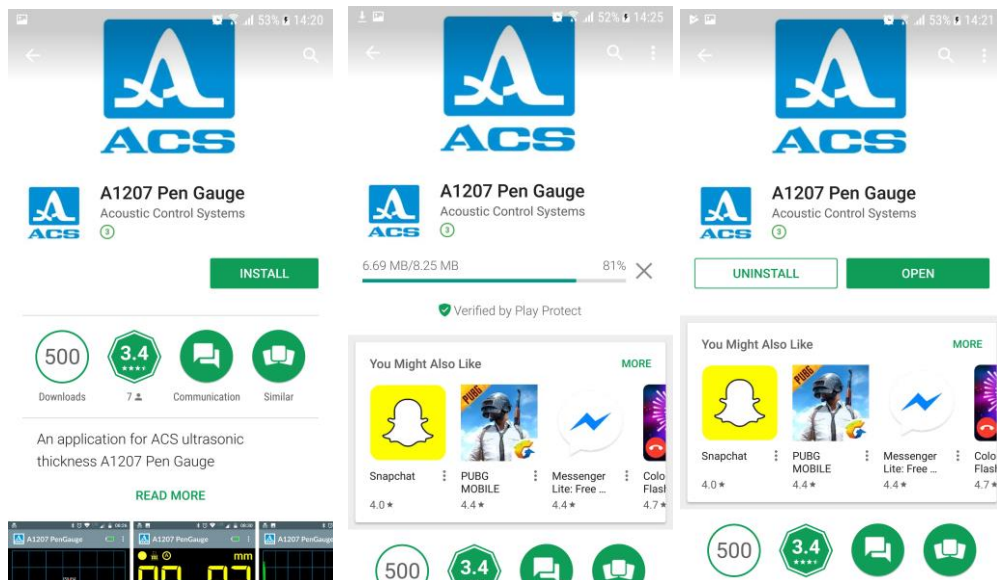


Fig. 2. Installation from Google Play

Installation from APK-file

APK-file is an installation file of application on android devices. Such file can be downloaded to device via internet or copied from computer.

Transfer file from computer to android device

- 1) Connect your android device to computer;

- 2) Allow file transferring in android settings (Fig. 3)

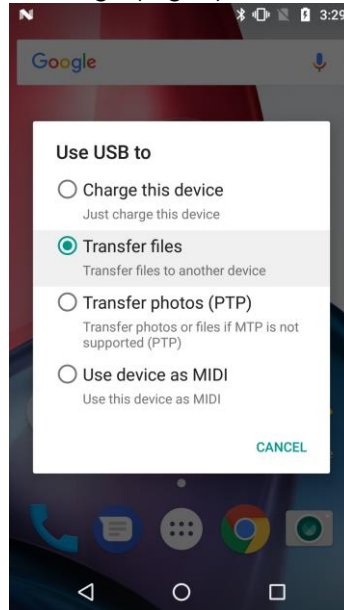


Fig. 3. USB connection menu

- 3) Find your device on your computer and copy APK-file (“com.acs.A1207.apk”) to android device (Fig. 4). You can put this file on any directory of your phone (i.e., “{android_storage}/Download”)

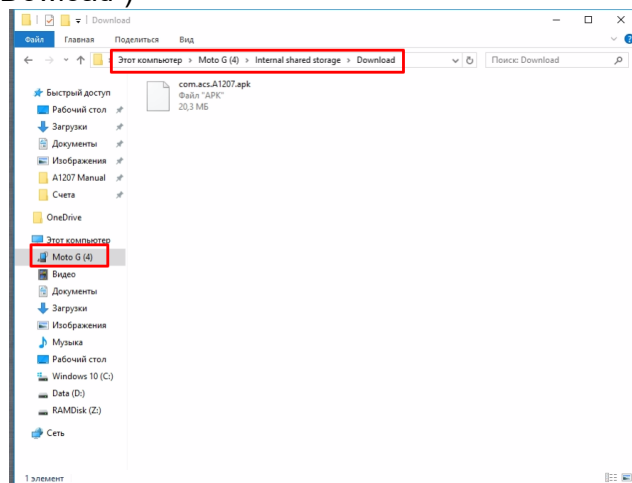


Fig. 4. Copy APK-file from computer to android device

Download file via internet

- 1) Insert special link ({url_link}) on your android device browser. This will start downloading process of the APK-file
- 2) When downloading is completed, you can find file in your ‘Download’ folder on android device

Find and install APK-file on android device

Before start installation make sure that your android device has any application for file exploring. If you do not have any preinstalled application, you can download such application from Google Play (as example you can use ‘ES File Manager’).

Installation from APK-file requires appropriate permissions. Go to Settings -> Security and enable option “Unknown sources” (Fig. 5).

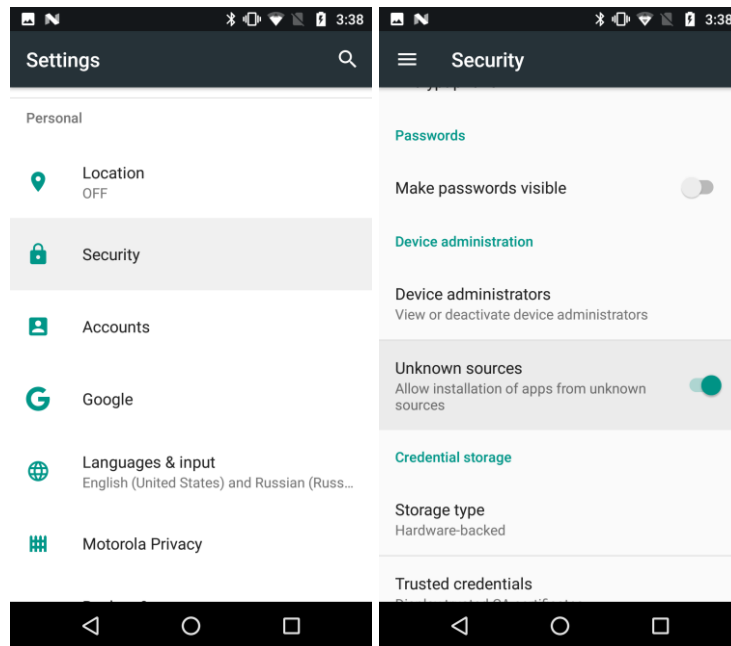


Fig. 5. Allow installation from unknown sources

Installation procedure:

- 1) Find downloaded APK-file on android device (Fig. 6) and click on it.

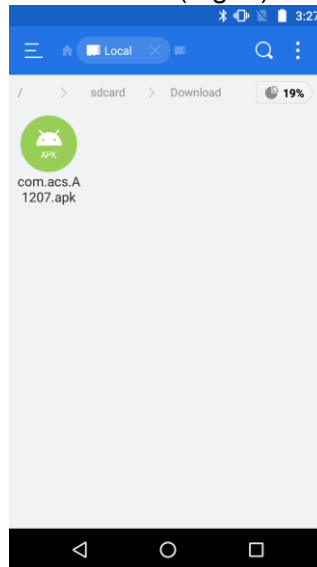


Fig. 6. APK-file on android device

- 2) Installation window guide will be launched. Click on 'Install' button, installation will be made automatically (Fig. 7)

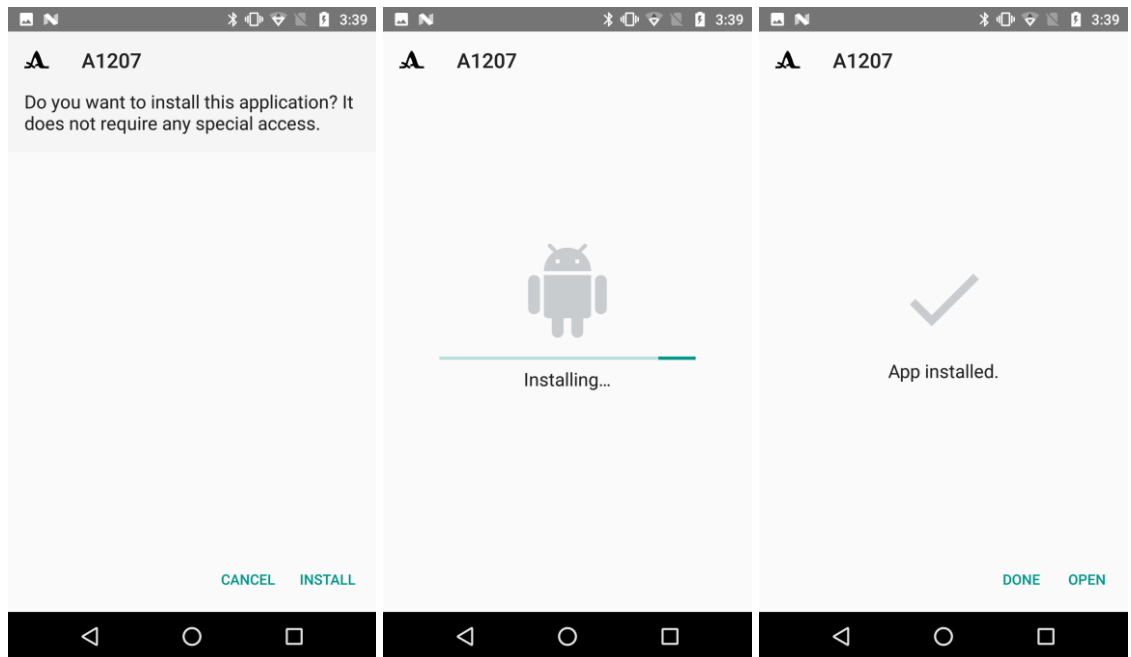


Fig. 7. Installation from APK-file

Uninstallation

Uninstallation procedure is the following (Fig. 8):

- 1) Find 'A1207' application on android menu
- 2) Tap and hold application icon
- 3) Move it to 'Delete' section, pop-up confirmation window will be shown
- 4) Confirm uninstalling

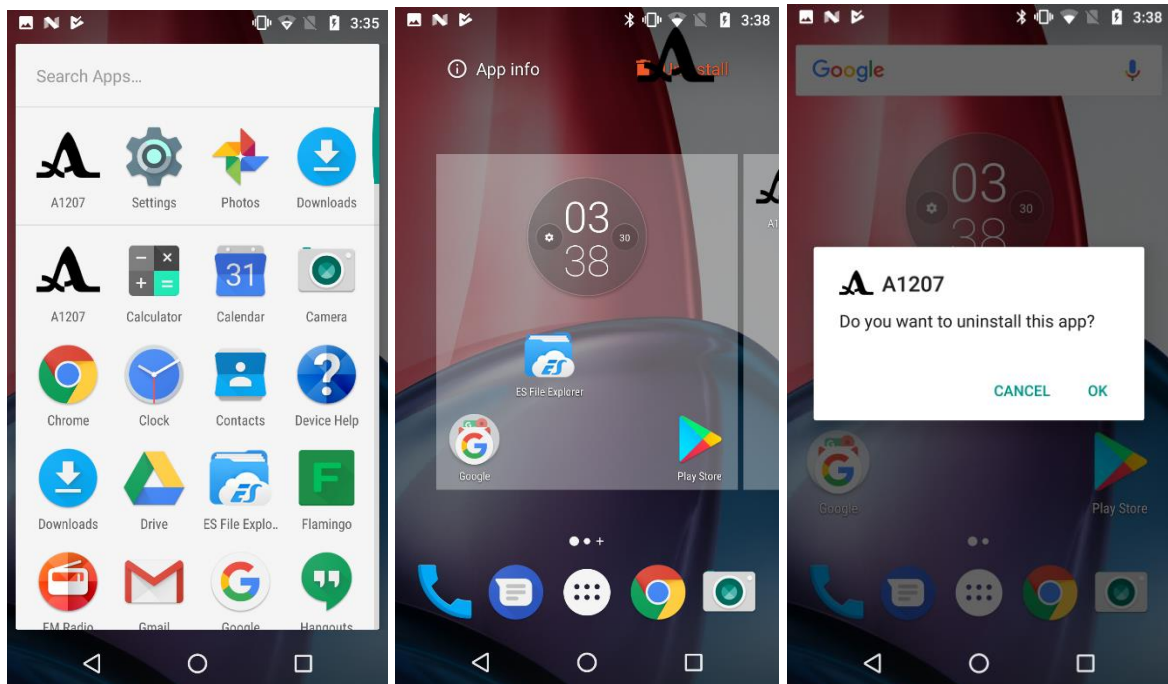


Fig. 8. Uninstallation of the application

First launch

Application is not working without Bluetooth on android device. When you launch application for the first time you will be asked to enable Bluetooth (if it was not enabled before from android settings directly) (Fig. 9). Click on 'Allow' button.

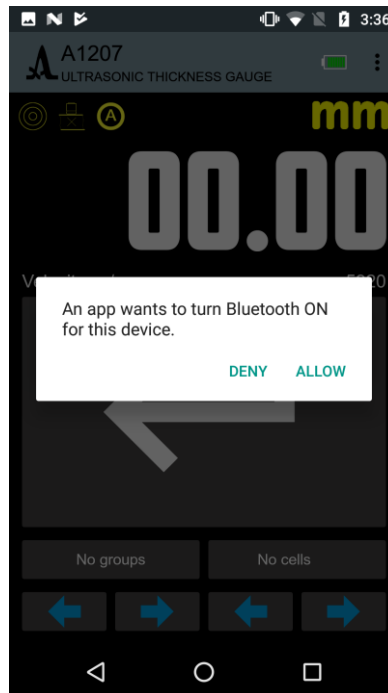


Fig. 9. Bluetooth permission

Also when application is required some other permissions such as access to storage and access device location.

Storage permission is required only for saving and getting data files, images, some other setting files on your android internal storage (Fig. 10).

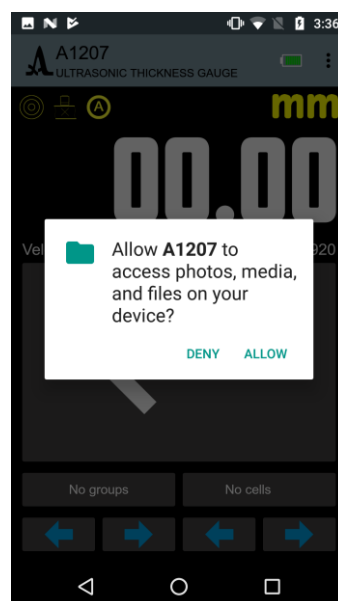


Fig. 10. Storage permission

Location permission is required only for using Bluetooth discovering of nearby devices (Fig. 11).

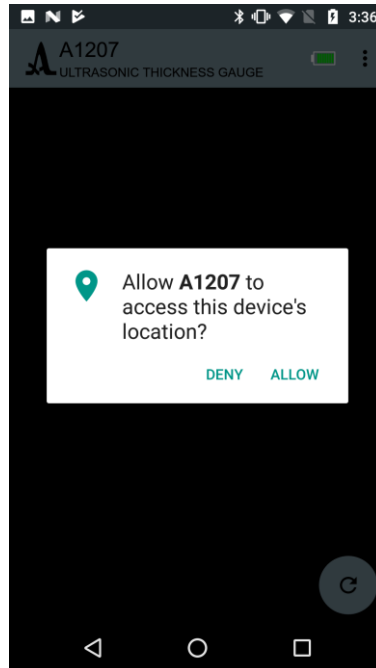


Fig. 11. Location permission

Pairing devices from Bluetooth settings

You can pair Bluetooth device from Bluetooth setting (communication with A1207 device is possible only if device will be paired). Pairing procedure is made automatically when you connecting to device from 'Connectivity' tab. Such devices will have "NotPaired" status label on 'Connectivity' tab.

- 1) Turn on A1207 device.
- 2) Go to Bluetooth setting and start discovering. A1207 device will appear on 'Available devices' section (Fig. 12)

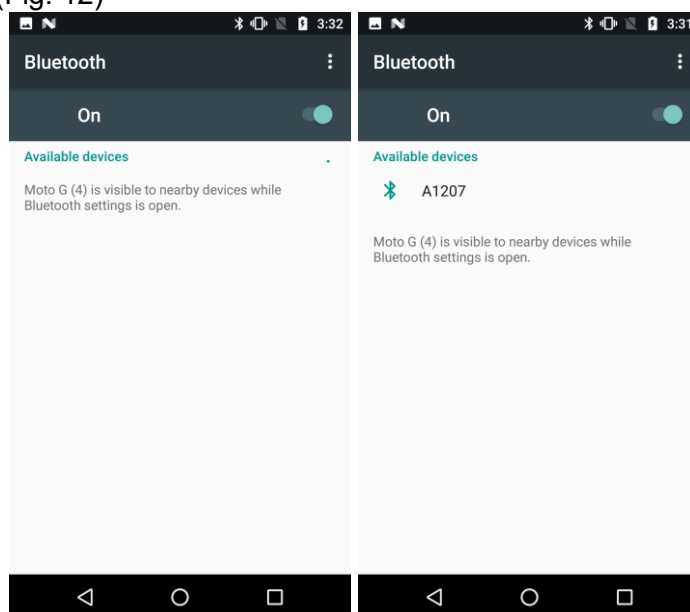


Fig. 12. Bluetooth discovering

- 3) Click on A1207 device. Pop-up window will be shown. Enter pin “0000” and click ok (Fig. 13)

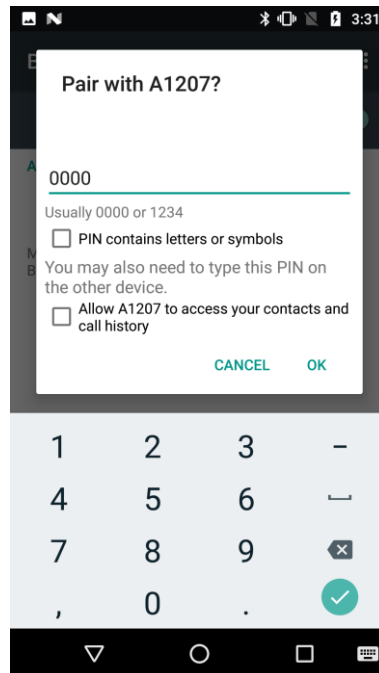


Fig. 13. Device pairing

- 4) Device will be paired and shown in ‘Paired devices’ section (Fig. 14)

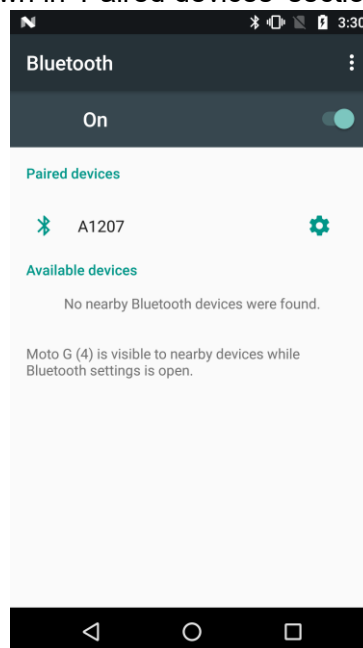


Fig. 14. A1207 paired devices

Device connection from ‘Connectivity’ tab

‘Connectivity’ tab (Fig. 15) shows all available and paired A1207 devices in nearby location. Devices has 4 statuses:

- “NotPaired” – device is not paired
- “Offline” – device paired but not turning on
- “Online” – device paired and turning on

- “Connected” – device paired and currently connected for communication

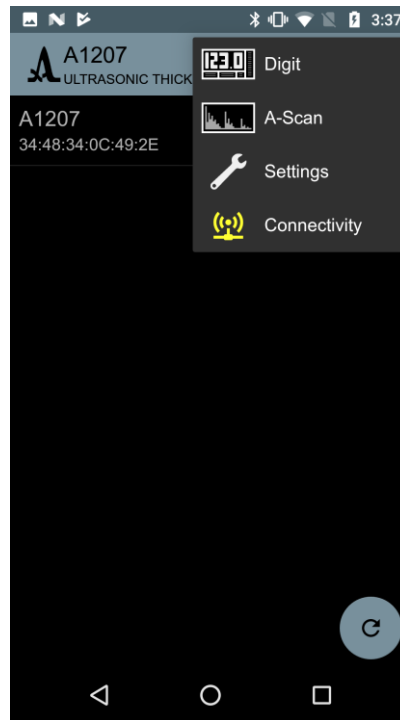


Fig. 15. 'Connectivity' tab

Communication is held only with paired devices. That's why when you connect to 'NotPaired' device, pairing procedure will be held automatically. Pin will be entered automatically as well (Fig. 16).

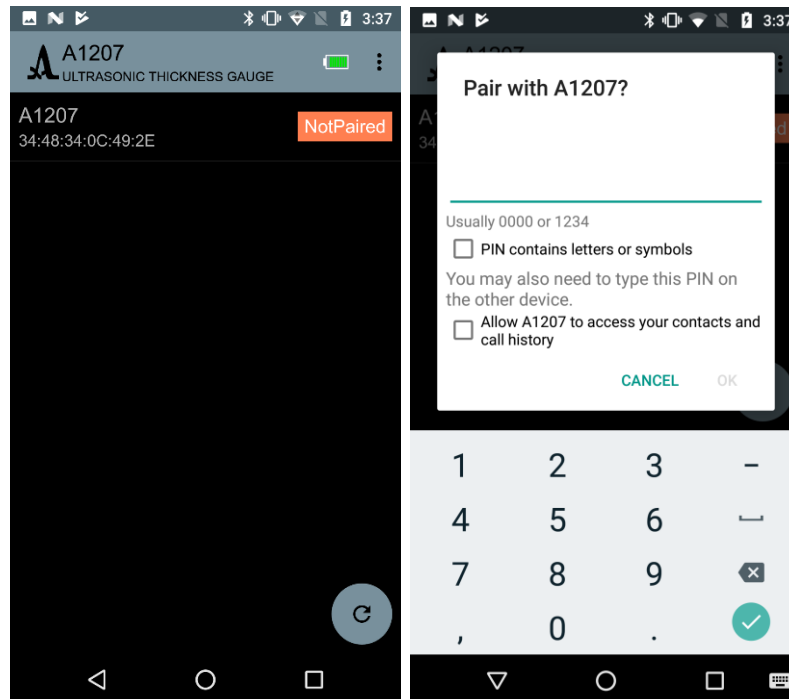


Fig. 16. Auto pairing from 'Connectivity' tab

Connection procedure:

- 1) Go to 'Connectivity' tab (Fig. 15)
- 2) Auto discovering starts automatically (the list will be updated when new devices will be found)
- 3) If auto discovering is not started, you can press on 'Discover' icon (floating button)
- 4) For connection single tap on item in the devices list, connection will be done and communication will be started automatically
- 5) Status will be changed to 'Connected' (Fig. 17)

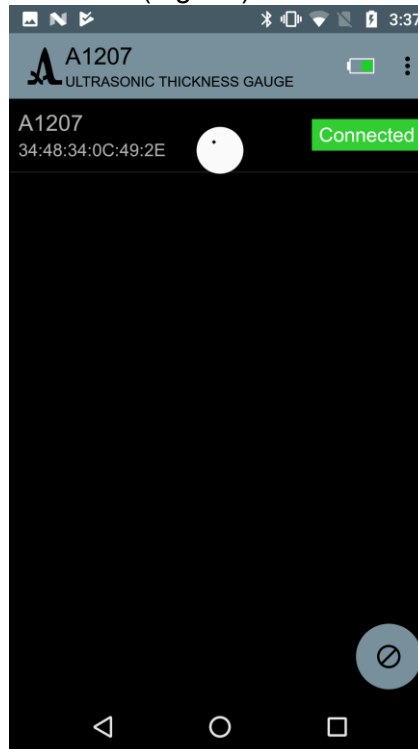


Fig. 17. Connected device